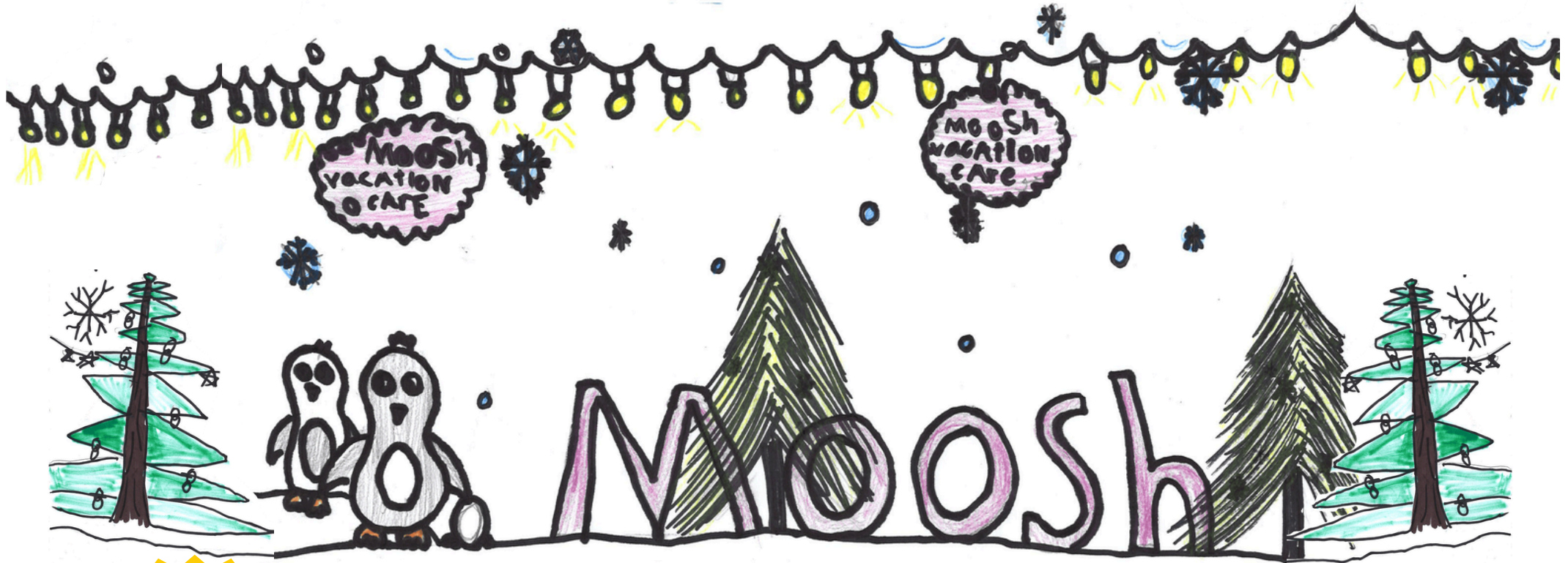
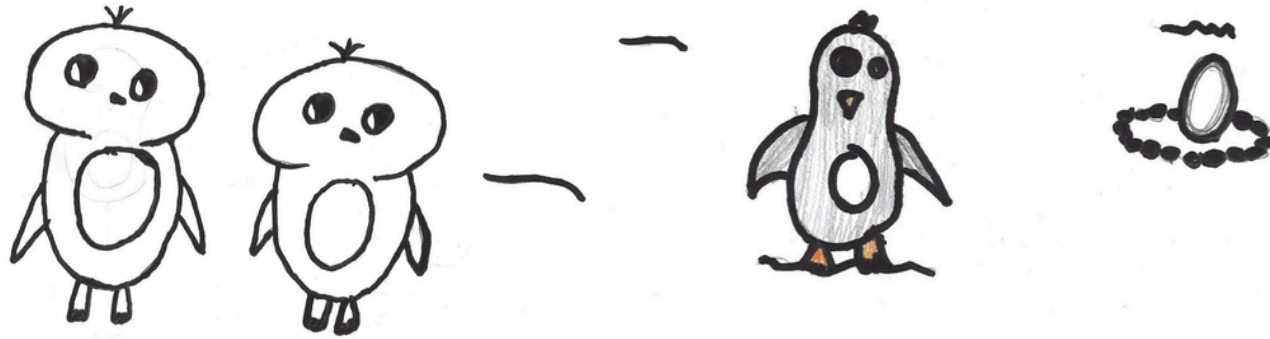


# 2026 WINTER VACATION CARE PROGRAM



**CLAIM CCS ON ALL BOOKINGS AND SAVE!**



Artwork by Ella-Rose, Clara and Lua

# 2026 WINTER VACATION CARE PROGRAM



**Onsite / Special Guest Activities: \$85 per day ||| Offsite Excursion Activities: \$100 per day**

All children can stay onsite or go on excursions, subject to minimum age and ability requirements as stated on each day. **If you are eligible for CCS (Child Care Subsidy), you can claim with us!** Activities have limited numbers and are booked on a first come first served basis. There is a **28-day cancellation policy** for Vacation Care bookings. Please email [info@manlyoosh.com.au](mailto:info@manlyoosh.com.au) if you would like to cancel Vacation Care bookings, cancellations cannot be made on the Xplor Home app. Please be aware that full fees will be charged for any cancellations made within the 28-day period. The cancellation needs to be made in writing at least 28-days before the actual booking. If you inform MOOSH 28-days or more before the booking, you will not be charged. Bookings for Manly Village Public School children should be made by Friday 12<sup>th</sup> June 2026. Places will be available to non-Manly Village Public School children after this date.

## How to Book

Manly OOSH uses Xplor to manage bookings.



If not already enrolled at MOOSH, enrol online at [manlyoosh.com.au](http://manlyoosh.com.au) using a desktop or laptop computer (as you will need to upload forms etc) and wait up to 48 hours for us to manage and confirm your enrolment.

Xplor will send you a welcome email. Create an Xplor account using the unique link provided.

You can then make bookings using the booking calendar in the Xplor Home App on your mobile.

It is your responsibility to check the booking has been made correctly in the booking calendar. You are responsible for making sure the booking is correct - if you are unsure, please contact the MOOSH office.

## What to Wear

A **MOOSH hat** is a must. Available for \$15 from the MOOSH office.



**Enclosed shoes** and **sun-safe clothing** are required - please wear shoes that are good for being active in, will not slip off or result in a stubbed toe, and clothes that cover shoulders and are appropriate for the activity.



If coming to a water or themed activity, **please arrive dressed and ready to go!**



## What to Bring

A **backpack** that secures belongings and keeps children's hands free.



**Morning Tea** (between 9-10am), **Lunch** (between 12-1pm) and a **refillable water bottle** - it is important to stay fed and hydrated all day



**Spare clothes** as sometimes there are accidents or messes.



Programmed activities have been selected based on consultation and feedback from children, parents, staff and community members. The 'Accessible' symbol identifies activities suitable for children with breaks, sprains, and mobility limitations. The 'Weather Pending' symbol means an alternative onsite activity will be arranged in the event of wet weather. The program uses the following codes:



Children's Choice



Parent's Choice



Educator's Choice



Community Involvement



Accessible



Weather Dependent

## General Information

- Vacation Care hours are **7am-6pm**. Check the information for each day for specific activity times - children must arrive prior to the listed departure time on excursion days.
- Pick up after 6pm will incur a late collection fee of \$30 every 15 minutes.
- **Permission/Waiver Forms** attached to this document must be completed when making your online booking and sent to [info@manlyoosh.com.au](mailto:info@manlyoosh.com.au)
- MOOSH provides Breakfast between 7-8am and Afternoon Tea between 3:30-4:30pm.
- Staff to child ratios are determined by risk assessments and do not exceed 1:15. Individual staff to child ratios are displayed under each activity on the Vacation Care program.
- Risk assessments are available for programmed activities at the service on request.
- To be permitted to attend you must have current bank account details listed in the Xplor Home App.
- No responsibility will be accepted for personal belongings or property brought to MOOSH.
- MOOSH is a **nut and egg free** service due to life threatening allergies. Please do not pack these in lunch boxes.

# WEEK 1 PROGRAM

## ONSITE ACTIVITIES for K - 6



Monday 6.7.26  
**MOOSH LEGO MASTERS**



Be ready to unleash your most creative design ideas as we team up to make the greatest **Lego creations!** Who will be able to impress the judges and be the **MOOSH Lego Masters?**

Activity from 10am - 2pm  
50 Places, 1:15 staff:child ratio



Tuesday 7.7.26  
**WINTER WORLD CUP**



Are you ready to compete in the **MOOSH Winter World Cup?** In teams we will verse each other in **soccer** as well as other sports and challenges to gain points and glory!

Activity from 10am - 2pm  
50 Places, 1:15 staff:child ratio



Wednesday 8.7.26 **SPECIAL GUEST**  
**FISH WHISPERERS**



For **NAIDOC Week** this fun-filled day will allow us to test our skills on an **Indoor Fishing Simulator**, and teach us about the **Dreamtime story of Thukeri** and traditional indigenous Australian fishing methods.

Activity from 12pm - 3pm  
50 Places, 1:15 staff:child ratio



Thursday 9.7.26  
**GAMES DAY**



Do you like playing games? Then you are going to love today - join in group **parachute** and **ball games** before versing your friends in **chess, pool, table tennis** and more!

Activity from 10am - 2pm  
50 Places, 1:15 staff:child ratio



Friday 10.7.26  
**TEDDY BEARS PICNIC**



If you come down to MOOSH today, you're sure of a big surprise - **today's the day the teddy bears have their picnic**, and you (and your teddy bear) are invited! Come for the picnic, games, stories and more!

Activity from 10am - 2pm  
90 Places, 1:15 staff:child ratio



## OFFSITE EXCURSION ACTIVITIES for 2 - 6

Monday 6.7.26  
**MINI GOLF**



Join us for a day at Precision Golf as we putt past the mini surfboards at Freshie, navigate around the rockpools of Curly and more fun **Mini Golf** challenges!

Bus to Cromer  
Departure: 9:15am / Return: 2pm  
40 Places, 1:8 staff:child ratio



Tuesday 7.7.26  
**ICE ZOO**



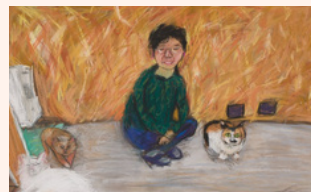
It's time to **chill out at the ice rink!** Learn the basics of ice skating with the **Ice Zoo** staff before heading off with the MOOSH crew.

**Must wear helmet and socks**

Bus to Alexandria  
Departure: 8:15am / Return: 1:30pm  
40 Places, 1:8 staff:child ratio

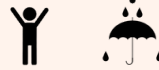


Wednesday 8.7.26  
**ART GALLERY of NSW**



Today we are headed to the **Art Gallery** to see exhibits including the Young Archies, Sou Sou and the Gallery's Aboriginal Art collection before having lunch and a play in the **Botanical Gardens**.

Ferry to Circular Quay, Walk to Gallery  
Departure: 8am / Return: 4pm  
40 Places, 1:8 staff:child ratio



Thursday 9.7.26  
**LASER TAG**

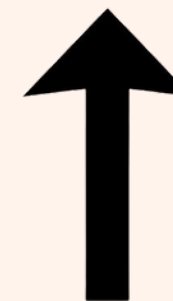


Wrangle the troops, watch your back and catch your opponents during 2 games of **Laser Tag** at **Strike Chatswood**, before heading across the road to Chatwood park for a play!

Bus to Chatswood, Walk to Park  
Departure: 8:30am / Return: 2:30pm  
40 Places, 1:8 staff:child ratio



Friday 10.7.26  
**ONSITE ONLY**



# WEEK 2 PROGRAM

## ONSITE ACTIVITIES for K - 6



Monday 13.7.26  
**CLAY CREATIONS**



Get creative in a hands-on way as we dedicate a whole day to **clay creations**. Let your **imagination run wild** and see what shapes, animals, people, plants, buildings and more you can create!

Activity from 10am - 3pm  
50 Places, 1:15 staff:child ratio



Tuesday 14.7.26  
**RETRO ARCADE GAMES**



Come along for a great day of hours of fun as we test our reaction speed with some of the best **classic arcade games** such as **Donkey Kong, Mario, Pacman, Space Invaders** and more!

Activity from 10am - 3pm  
50 Places, 1:15 staff:child ratio



Wednesday 15.7.26  
**BUBBLE SOCCER**



Fun, happiness and joy are all part of **bubble soccer**, and you will feel these as you bounce around the court and off your friends as we verse each other in soccer and other challenges!

Activity from 10am - 2pm  
50 Places, 1:15 staff:child ratio



**SPECIAL GUEST**

Thursday 16.7.26  
**PJ MOVIE DAY**



There is nothing better than snuggling up with some **popcorn** and watching a **movie** and today you get to do that at MOOSH - **come in your pyjamas** to get extra comfy for a fantastic day with your friends!

Activity from 10am - 3pm  
50 Places, 1:15 staff:child ratio



Friday 17.7.26  
**BOOTCAMP**



Line up for **BootCamp** with **Cube Sports** instructors where your **fitness, speed and agility** will be put to the test! Working individually and as teams see if you can make it over the finish line.

Activity from 10am - 2pm  
90 Places, 1:15 staff:child ratio



**SPECIAL GUEST**

## OFFSITE EXCURSION ACTIVITIES for 2 - 6

Monday 13.7.26  
**BUSH DETECTIVES**



This immersive nature experience with **Dr Sarah** will have us engaged in storytelling, creative thinking, exploration, nature crafts and problem solving to become **Bush Detectives!**

Walk to Little Manly  
Departure: 8:45am / Return: 3pm  
40 Places, 1:8 staff:child ratio



Tuesday 14.7.26  
**TIMEZONE**



At **TimeZone** there are loads of arcade games to play - let's see who the champion among you and your friends will be! We will then have lunch and a play in **James Meehan Reserve!**

Bus to Dee Why, Walk to Park  
Departure: 9:15am / Return: 3pm  
40 Places, 1:8 staff:child ratio



Wednesday 15.7.26  
**SPLASHERS PLAYGROUND**



Come down for some splashing fun at this **water wonderland** located at **Sydney Olympic Park** complete with **waterslide, rapid river ride and water playground!**

Bus to Sydney Olympic Park  
Departure: 8:15am / Return: 4pm  
40 Places, 1:5 staff:child ratio



Thursday 16.7.26  
**AT THE MOVIES**



Join us at the cinema as we see the latest screening of the live-action **MOANA!** Enjoy the movie and some snacks with your friends before heading to **Rat Park** for lunch and a play.

Bus to Warriewood, Walk to Park  
Departure: 8:30am / Return: 3pm  
40 Places, 1:8 staff:child ratio



**RATED PG**

Friday 17.7.26  
**ONSITE ONLY**



# TERM 3, WEEK 1 PROGRAM

## ONSITE ACTIVITY for K - 6

Monday 20.7.26  
**XMAS in JULY**



Let's celebrate the end of the holidays and the middle of the year with **Xmas in July**. It is going to be a day jam packed with activities, snacks, presents and maybe even some special visitors...!

Activity from 10am - 2:30pm  
90 Places, 1:15 staff:child ratio



Tuesday 21.7.26  
**BACK TO SCHOOL FOR TERM 3**



# 2026 WINTER VACATION CARE

## Excursion and Transport Permission Form



During the upcoming **2026 Winter Vacation Care Program**, Manly OOSH will be **offering excursions** that are **off-site and require transport to and from** (listed below). If your child is attending any of these days, this form must be completed as permission to partake in these excursion activities. The children will be accompanied by educators (and potentially parents or other volunteers) in numbers guided by the staff:child ratios for each activity. The educators will have the MOOSH mobile on them (0481 063 117) if you need to contact us during the day.

*Risk assessments for all excursions are available upon request from the MOOSH office.*

**Child's Name:** \_\_\_\_\_

**Year/Age:** \_\_\_\_\_

I hereby give permission for my child to participate in **off-site** and **excursions** offered as part of Manly OOSH's 2026 Winter Vacation Care Program. I also give permission for my child to ride on the arranged transportation to and from the venue of the excursion:

*please tick relevant excursions*

- **Monday 6.7.2026 - Mini Golf** (Bus to Cromer, Departure: 9:15am / Return 2pm) [1:8 staff:child ratio]
- **Tuesday 7.7.2026 - Ice Zoo** (Bus to Alexandria, Departure: 8:15am / Return 1:30pm) [1:8 staff:child ratio]
- **Wednesday 8.7.2026 - Art Galley of NSW** (Ferry to Circular Quay/Walk to Gallery, Departure: 8am / Return 4pm) [1:8 staff:child ratio]
- **Thursday 9.7.2026 - Laser Tag** (Bus to Chatswood/Walk to Chatswood Park, Departure: 8:30am / Return 2:30pm) [1:8 staff:child ratio]
- **Monday 13.7.2026 - Bush Detectives** (Walk to Little Manly, Departure: 8:45am / Return 3pm) [1:8 staff:child ratio]
- **Tuesday 14.7.2026 - TimeZone** (Bus to Dee Why/Walk to James Meehan Park, Departure: 9:15am / Return 3pm) [1:8 staff:child ratio]
- **Wednesday 15.7.2026 - Splashers Playground** (Bus to Sydney Olympic Park, Departure: 8:15am / Return 4pm) [1:5 staff:child ratio]
- **Thursday 16.7.2026 - At The Movies** (Bus to Warriewood/Walk to Rat Park, Departure: 8:30am / Return 3pm) [1:8 staff:child ratio]

**Parent/Guardian's Name:** \_\_\_\_\_

**Signature and Date:** \_\_\_\_\_

# 2026 WINTER VACATION CARE

## Swimming/Water Activity Permission Form



During the upcoming **2026 Winter Vacation Care Program**, Manly OOSH will be attending a **water-based excursion**. If your child is attending this excursion, this form must be completed as permission to partake in swimming and water activities. The children will be accompanied by educators (and potentially parents or other volunteers) following a 1:5 staff:child ratio. There will also be trained lifeguards onsite assisting and monitoring.

The educators will have the MOOSH mobile on them (0481 063 117) if you need to contact us during the day.

*A risk assessments for this excursion is available upon request from the MOOSH office.*

**Child's Name:** \_\_\_\_\_

**Year/Age:** \_\_\_\_\_

I hereby give permission for my child to participate in the **supervised swimming** and **water activity** as part of Manly OOSH's 2026 Winter Vacation Care Program:

**Wednesday 15.7.2026 - Splashers Playground** (Bus to Sydney Olympic Park, Departure: 8:15am / Return 4pm) [1:5 staff:child ratio]

My child's swimming ability is:

*please circle appropriate level*

**Poor**

**Average**

**Good**

**Very Good**

NOTE: Children **must** be at least an average swimmer to participate in the above swimming/water activity.

**Parent/Guardian's Name:** \_\_\_\_\_

**Signature and Date:** \_\_\_\_\_

# 2026 WINTER VACATION CARE

## Onsite PG Movies Permission Form



During the upcoming **2026 Winter Vacation Care Program**, Manly OOSH is running the activity **PJ Movie Day** on **Thursday 16 July 2026** which will be held onsite. As there will be children of a range of ages in attendance, we will be offering both G and PG movies in separate areas, however permission is required for watching PG movies. If your child is attending PJ Movie Day, this form must be completed as permission to partake in the viewing of all PG movies on the day.

*A risk assessments for this activity is available upon request from the MOOSH office.*

**Child's Name:** \_\_\_\_\_

**Year/Age:** \_\_\_\_\_

I hereby give permission for my child to watch PG movies at PJ Movie Day on Thursday 16 July 2026, which is offered as part of Manly OOSH's 2026 Winter Vacation Care Program.

**Parent/Guardian's Name:** \_\_\_\_\_

**Signature and Date:** \_\_\_\_\_

